

SDN Security

COINS Summer School

Dr. Sandra Scott-Hayward

23 August 2015

Implementation Challenges of SDN

Performance vs. Flexibility

Scalability

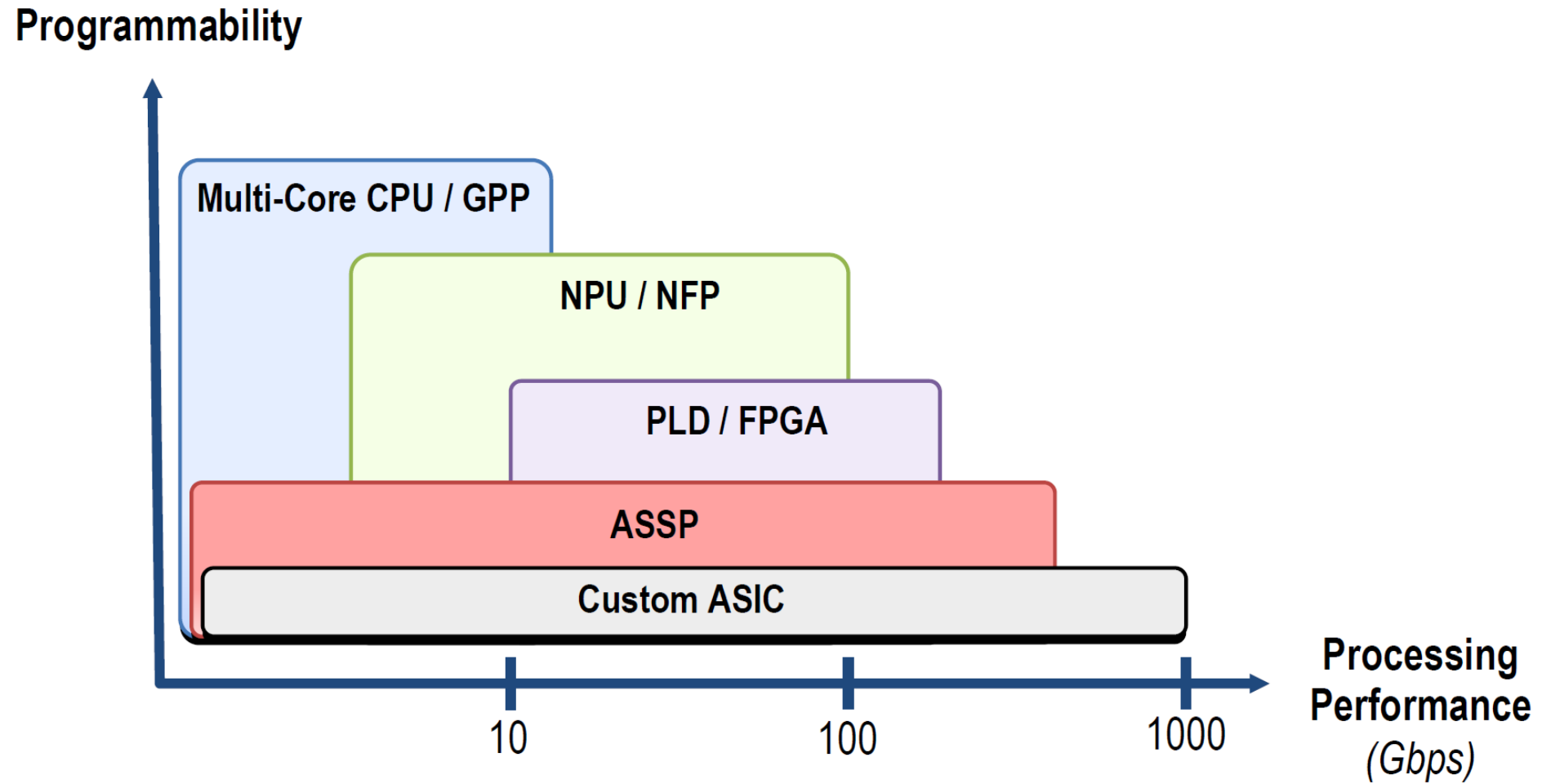
Interoperability

Security

How can the programmable switch be achieved?

- Performance – Processing speed of the network node considering both throughput and latency
- Programmability – Capability to change and/or accept a new set of instructions in order to alter functional behaviour
- Flexibility – Ability to adapt systems to support new unforeseen features (e.g. applications/protocols/security measures)

Performance vs. Flexibility

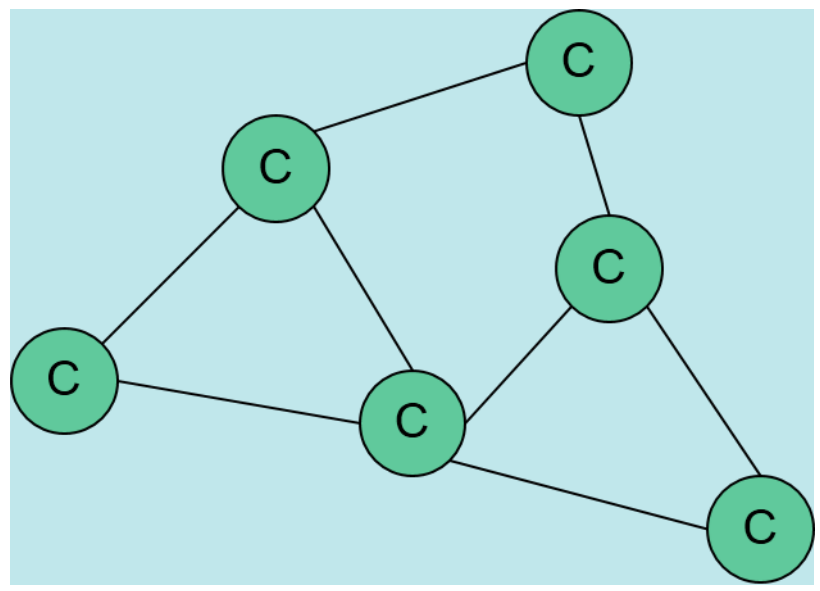


=> Combine technologies for a hybrid architecture

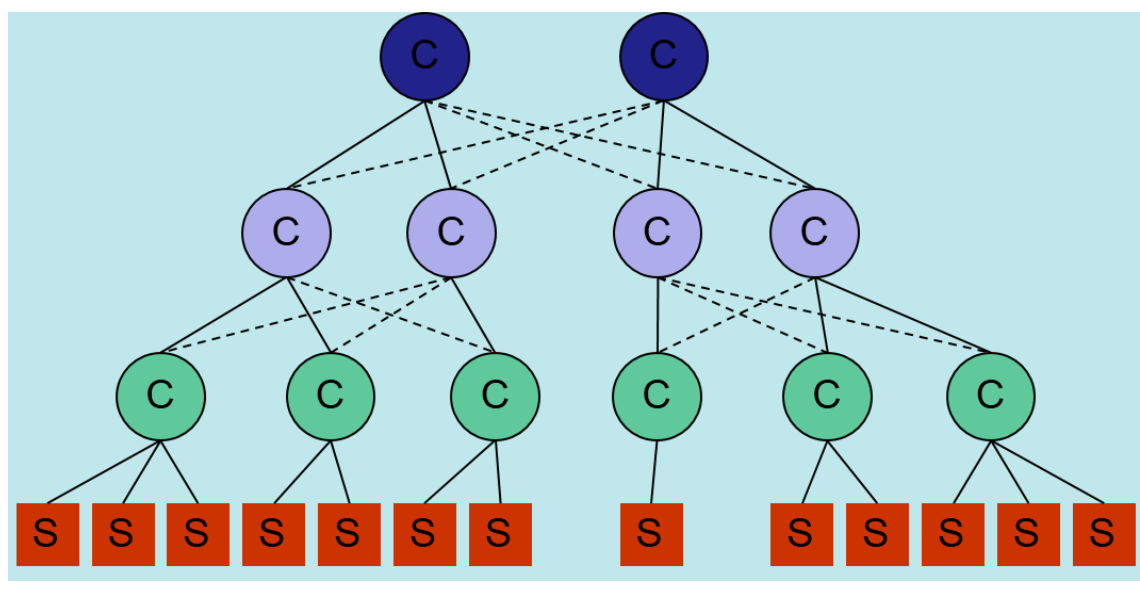
How can the Controller be enabled to provide a global network view?

- Latency introduced by exchanging network information between multiple nodes and a single controller
- How SDN controllers communicate with other controllers using the east-westbound APIs
- Size and operation of the controller back-end database

Distributed Control - Clustering



Hierarchical Control



How can the Software-Defined Network be protected from malicious attack?

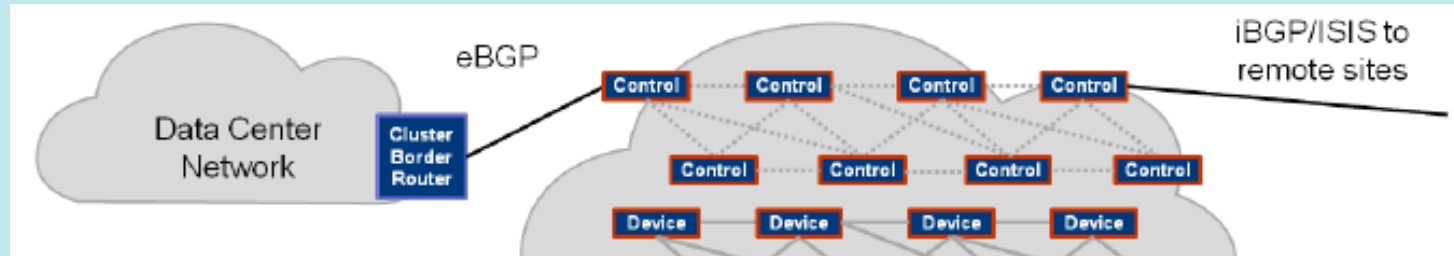
- Authentication and authorization mechanisms for multiple organizations to access network resources (isolation, protection)
- Controller impersonation
- Denial of Service – Packet-In Flooding, Flow Table Flooding
- Open APIs = Open doors?

How can SDN solutions be integrated into existing networks?

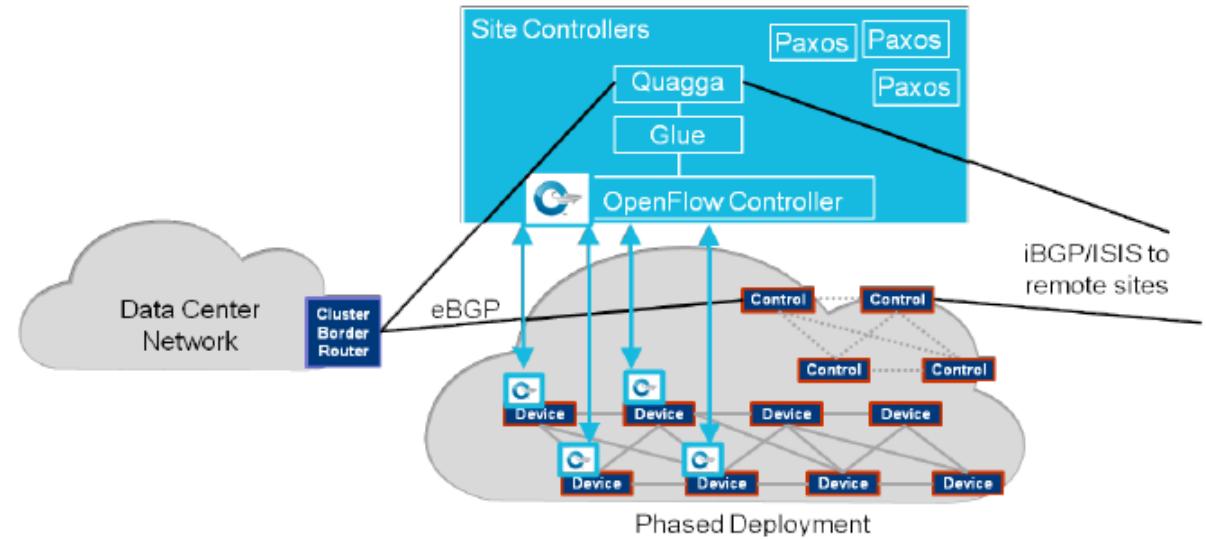
- Legacy-to-Greenfield, Legacy-to-Mixed, Legacy-to-Hybrid (=> hybrid switches)
- Standardization
- Conformance and Interoperability Benchmarking (ONF PlugFest)

Google legacy-to-hybrid migration:

B4 Starting Network

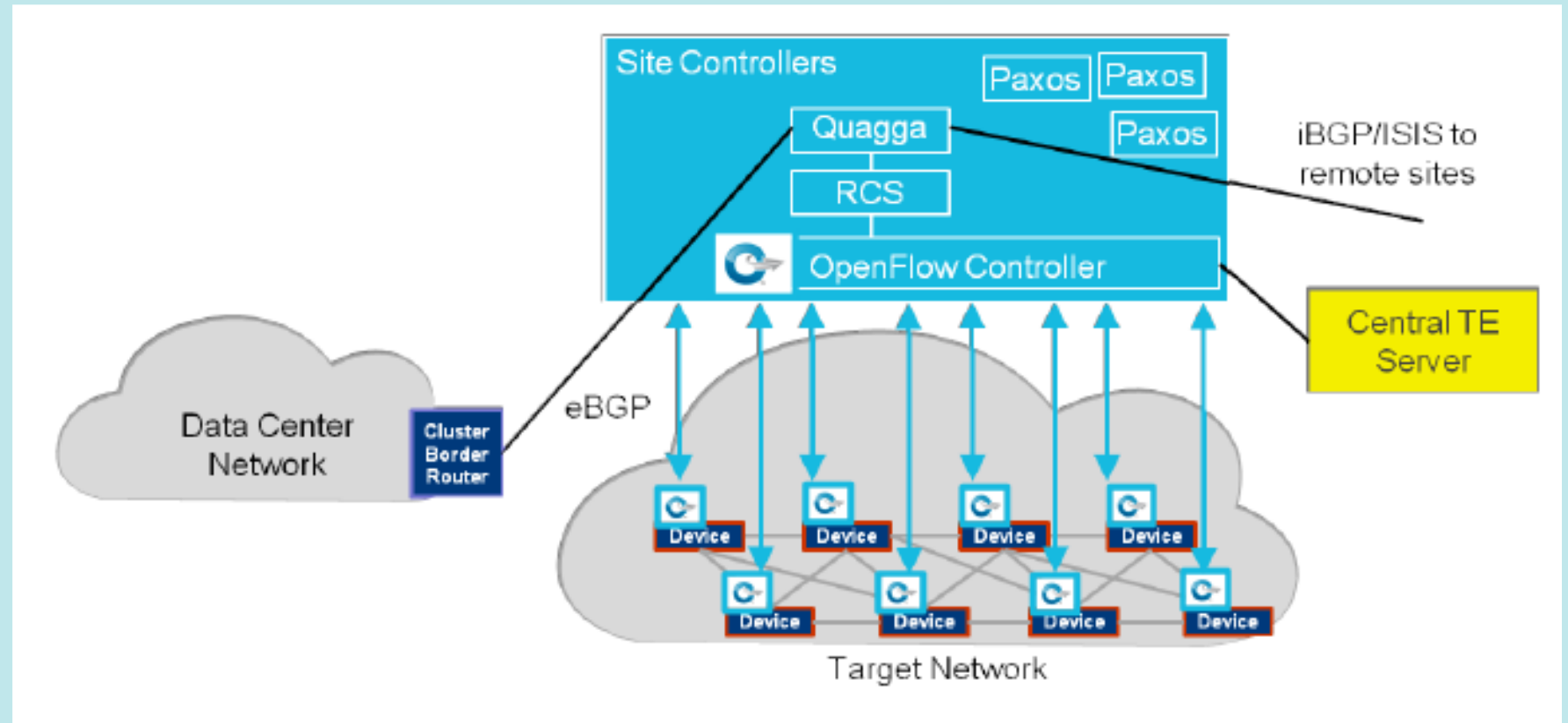


B4 Phased Deployment Mixed Network



Google legacy-to-hybrid migration:

B4 Target Network





End Session 3